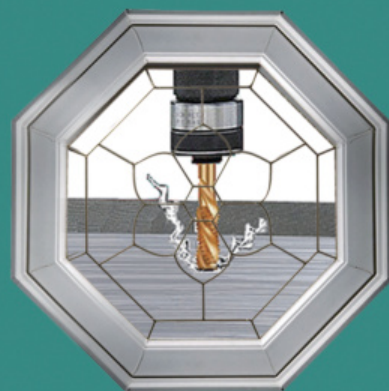




SANFORD



EXPERT IN PNEUMATIC & ELECTRIC TAPPING MACHINES

Automatic Chamfering Machines
Drill Bit & End Mill Grinding Machine
Bench Vises And Related Accessories



SANFORD

Bengbu Sanford Machinery Co.,Ltd

ADD: Room 305, 3/F Guzhen E-Commerce Industrial
Park, Bengbu, Anhui, China

Tel: +86-552-2132858

Fax: +86-552-2132859

Email: sales@sanford-machine.com

Post Code: 233700

BENGBU SANFORD MACHINERY CO.,LTD

Company Profile

Bengbu Sanford Machinery Co.,Ltd is a leading Metalworking Machinery supplier in China, specialize in developing, manufacturing and exporting of high quality Pneumatic & Electric Tapping Machines, Electric Chamfering Machines, Drill Bit & End Mill Grinding Machines, Bench Vises and related accessories. Various of machines are widely used in Machine Manufacturing, Mould and Hardware Processing, Auto Parts Manufacturing and other metals, plastics parts processing, greatly reduce processing time, improve work efficiency and save human resources.

Since established, Sanford Machine adhere the principle of "to provide high-quality products and service", we constantly adopt new technologies, new processing technic, new equipments, and new materials to improve product quality, concentrate all our efforts on developing products that meet the requirements of critical customers with the highest demands.

Today, our products are not only very popular in mainland China, also were exported to near 30 countries in West Europe, Middle East, Southeast Asia, South America and so on, get very good reputation and enjoying close partnership with our clients.

To learn more information or any questions, pls don't hesitate to contact us, we would appreciate the opportunity to discuss your particular requirements.

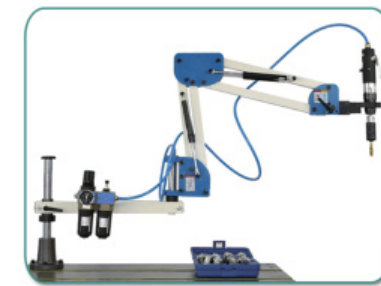


Pneumatic Tapping Machine



Features

- The machine is driven by compressed air, safe and high efficiency, small air pressure and volume(0.6-0.8mpa), very powerful torque output.
- Can tapping all kinds of steel, iron, copper, aluminum, plastic and other materials.
- Cylinder with overload protection device, low tapping breakage, high precision of screw thread, simple operation, no need much experience and technique.



3-Arm Model

Specifications

Model	SF-900-12	SF-900-16
Tapping Range	M3-M12	M3-M16
Air Pressure	6-8kg/cm ²	6-8kg/cm ²
No-load Speed	400rpm	250rpm
Max Work Radius	1000mm(3-Arm: 1500mm)	1000mm(3-Arm: 1500mm)
Gross Weight	20kg	20kg
Tapping Direction	Universal Direction	
Standard Collets (ISO Standard)	GT12, M3-M12	GT12, M3-M16
	DIN371/376, JIS or other standard collets optional	

M24 Pneumatic Tapping Machine



Features

- The machine is driven by compressed air, safe and high efficiency, small air pressure and volume(0.6-0.8mpa), very powerful torque output.
- Can tapping all kinds of steel, iron, copper, aluminum, plastic and other materials.
- Cylinder with overload protection device, low tapping breakage, high precision of screw thread simple operation, no need much experience and technique.

Specifications

Model	SF-900-24
No-load Speed	90rpm/250rpm
Air Pressure	6-8kg/cm ²
Tapping Range	M6-M24
Max Work Radius	1200mm(3-Arm: 1700mm)
Tapping Direction	Universal Direction
Gross Weight	40kg
Standard Collets (ISO Standard)	GT24, M6-M24 DIN371/376, JIS or other standard collets optional

M16 Electric Tapping Machine



Features

- The machine adopt servo drive control, with intelligent torque protection, supersede traditional lathe and drilling machine, overcome limitation of manual tapping.
- Advanced mechanical design, various of parts casted by mould, with very high rigidity, durable without deformation, attractive appearance.
- HD Touch Screen makes the operation much more convenient and flexible, can realize work vertical and universal direction to complicated and cumbersome work, positioning rapidly and process accurately.
- Stepless speed changes, Manual Mode, Automatic Mode and Deep Hole Mode, three work mode optional.
- Automatic Mode can control tapping depth precisely, no need button operation, controlled by depth controller automatically.
- Repetitive positioning rapidly, high work efficiency, fast tapping speed.
- Can tapping all kinds of lead, steel, iron, copper, aluminum, plastic and other materials.



Specifications

Model	SF-1000-10	SF-1000-12	SF-1000-16
Power	220V /110V, 50HZ, 600W		
Tapping Range	M3-M10	M3-M12	M3-M16
Highest Speed	1000rpm	625rpm	312rpm
Max Work Radius	1100mm(3-Arm: 1500mm)		
Vertical Extension	550mm		
Tapping Direction	Universal Direction		
Gross Weight	30kg		
Standard Collets (ISO Standard)	GT12, M3-M10 DIN371/376, JIS or other standard collets optional	GT12, M3-M12	GT12, M3-M16

M36 Electric Tapping Machine



Features

- The machine adopt servo drive control, with intelligent torque protection, supersede traditional lathe and drilling machine, overcome limitation of manual tapping.
- Advanced mechanical design, various of parts casted by mould, with very high rigidity, durable without deformation, attractive appearance.
- HD Touch Screen makes the operation much more convenient and flexible, can realize work vertical and universal direction to complicated and cumbersome work, positioning rapidly and process accurately.
- Stepless speed changes, Manual Mode, Automatic Mode and Deep Hole Mode, three work mode optional.
- Automatic Mode can control tapping depth precisely, no need button operation, controlled by depth controller automatically.
- Repetitive positioning rapidly, high work efficiency, fast tapping speed.
- Can tapping all kinds of lead, steel, iron, copper, aluminum, plastic and other materials.



3-Arm Model

Specifications

Model	SF-1200-16	SF-1200-20	SF-1200-24	SF-1200-30	SF-1200-36
Power	220V/110V, 50HZ, 1200W				
Tapping Range	M6-M16	M6-M20	M6-M24	M6-M30	M6-M36
Highest Speed	625rpm	312rpm	200rpm	200rpm	156rpm
Max Work Radius	1200mm(3-Arm: 1700mm)				
Vertical Extension	600mm				
Tapping Direction	Universal Direction				
Gross Weight	48kg	48kg	48kg	50kg	50kg
Standard Collets (ISO Standard)	GT24, M6-M16	GT24, M6-M20	GT24, M6-M24	GT24, M6-M30	GT24, M6-M36
	DIN371/376, JIS or other standard collets optional				

M48 Electric Tapping Machine



Features

- The machine adopt servo drive control, with intelligent torque protection, supersede traditional lathe and drilling machine, overcome limitation of manual tapping.
- Advanced mechanical design, various of parts casted by mould, with very high rigidity, durable without deformation, attractive appearance.
- HD Touch Screen makes the operation much more convenient and flexible, can realize work vertical and universal direction to complicated and cumbersome work, positioning rapidly and process accurately.
- Stepless speed changes, Manual Mode, Automatic Mode and Deep Hole Mode, three work mode optional.
- Automatic Mode can control tapping depth precisely, no need button operation, controlled by depth controller automatically.
- Repetitive positioning rapidly, high work efficiency, fast tapping speed.
- Can tapping all kinds of lead, steel, iron, copper, aluminum, plastic and other materials.

Specifications

Model	SF-1300-48
Power	220V /110V, 50HZ, 1200W
Tapping Range	M16-M48
Highest Speed	50/200rpm
Max Work Radius	1300mm
Vertical Extension	600mm
Tapping Direction	Universal
Gross Weight	110kg
Standard Collets (ISO Standard)	GT48, M16-M48
	DIN371/376, JIS or other standard collets optional

New Electric Tapping Machine

Features

- The main components of the PLC are original imported, such as modules, chips, capacitors and so on, new design to make better performance in oil and dust proof.
- The serve motor is provided by the largest electric company in China, high cost imported optical encoder instead of magnetic encoder, higher precision and more stable.
- The machine frame is thicker and bigger to make machine more sturdy and durable.
- The power switch adopts one-button switch , which is practical and beautiful. It is matched military high-definition display and uses a cover to achieve dustproof and anti-collision.
- Touch Screen display interface more concise and multi-functional, easy to operate, with "Actual Depth" function to monitor real-time tapping depth dynamically. "Pre-set Parameter Select and Storage" function for save time to reset workpiece working Parameters.
- At each joint of the machine, the copper sleeve and the bearing are embedded to achieve the purpose of improve machine operation precision and flexibility.
- All the products passed eight links inspection after finished, also overload and anti-aging testing, which makes the machine more stable and powerful.



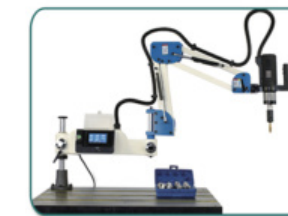
Specifications

Model	SFN-1000-10T	SFN-1000-12T	SFN-1000-16T
Power	220V /110V, 50HZ, 600W		
Tapping Range	M3-M10	M3-M12	M3-M16
Highest Speed	1000rpm	625rpm	312rpm
Max Work Radius	1100mm(3-Arm: 1500mm)		
Vertical Extension	550mm		
Tapping Direction	Universal Direction		
Gross Weight	30kg		
Standard Collets (ISO Standard)	GT12, M3-M10	GT12, M3-M12	GT12, M3-M16
	DIN371/376, JIS or other standard collets optional		

New Electric Tapping Machine

Features

- The main components of the PLC are original imported, such as modules, chips, capacitors and so on, new design to make better performance in oil and dust proof.
- The serve motor is provided by the largest electric company in China, high cost imported optical encoder instead of magnetic encoder, higher precision and more stable.
- The machine frame is thicker and bigger to make machine more sturdy and durable.
- The power switch adopts one-button switch , which is practical and beautiful. It is matched military high-definition display and uses a cover to achieve dustproof and anti-collision.
- Touch Screen display interface more concise and multi-functional, easy to operate, with "Actual Depth" function to monitor real-time tapping depth dynamically. "Pre-set Parameter Select and Storage" function for save time to reset workpiece working Parameters.
- At each joint of the machine, the copper sleeve and the bearing are embedded to achieve the purpose of improve machine operation precision and flexibility.
- All the products passed eight links inspection after finished, also overload and anti-aging testing, which makes the machine more stable and powerful.



3-Arm Model

Specifications

Model	SFN-1200-16T	SFN-1200-20T	SFN-1200-24T	SFN-1200-30T	SFN-1200-36T
Power	220V/110V, 50HZ, 1200W				
Tapping Range	M6-M16	M6-M20	M6-M24	M6-M30	M6-M36
Highest Speed	625rpm	312rpm	200rpm	200rpm	156rpm
Max Work Radius	1200mm(3-Arm: 1700mm)				
Vertical Extension	600mm				
Tapping Direction	Universal Direction				
Gross Weight	48kg	48kg	48kg	50kg	50kg
Standard Collets (ISO Standard)	GT24, M6-M16	GT24, M6-M20	GT24, M6-M24	GT24, M6-M30	GT24, M6-M36
	DIN371/376, JIS or other standard collets optional				

Electric Drilling & Tapping Machine



Features

- The machine adopt swing arm electric magnetic chuck lifting rod design to ensure verticality to the workpiece surface, and smoothness of the up/down sliding.
- The new Electric Drilling & Tapping Machine is produced in principle of best quality, high precision and high value. The main components of the PLC are original imported, such as modules, chips, capacitors and so on, new design to make better performance in oil and dust proof.
- The power switch adopts one-button switch, which is practical and beautiful. It is matched military high-definition display and uses a cover to achieve dustproof and anti-collision.
- Touch Screen display interface more concise and multi-functional, easy to operate, with "Actual Depth" function to monitor real-time tapping depth dynamically, "Pre-set Parameter Select and Storage" function for save time to reset workpiece working Parameters.



Specifications

Model	SFN-1000-12DT	SFN-1200-20DT
Power	220V/110V, 50HZ, 600W	220V/110V, 50HZ, 1200W
Tapping Range	M3-M12	M6-M20
Drilling Range	Φ1-Φ12	Φ3-Φ20
Highest Speed	1000rpm	625rpm
Max Work Radius	1100mm	1200mm
Vertical Extension	600mm	600mm
Gross Weight	35kg	55kg
Work Direction	Vertical	Vertical
Tapping Collet	GT12, M3-M12	GT12, M6-M20

Automatic Scrap Blowing Tapping Machine



Features

- Air Valve can be opened and closed in Touch Screen, air volume is adjustable by valve. Articulated joint design nozzles easy to adjust to any direction. Copper high-pressure nozzle, can withstand high pressure, with high hardness and durable to use.
- Compact design air pump and controller greatly save space and cost, powerful pump control air volume accurately.
- The new Electric Tapping Machine is produced in principle of best quality, high precision and high value. The main components of the PLC are original imported, such as modules, chips, capacitors and so on, new design to make better performance in oil and dust proof.
- The machine frame is thicker and bigger to make machine more sturdy and durable.
- The power switch adopts one-button switch, which is practical and beautiful. It is matched military high-definition display and uses a cover to achieve dust-proof and anti-collision.
- Touch Screen display interface more concise and multi-functional, easy to operate, with "Actual Depth" function to monitor real-time tapping depth dynamically, "Pre-set Parameter Select and Storage" function for save time to reset workpiece working Parameters.

Specifications

Model	SFC-1000-10B	SFC-1000-12B	SFC-1000-16B
Power	220V/110V AC, 50HZ, 600W		
Tapping Range	M3-M10	M3-M12	M3-M16
Max Work Radius	1100mm	1100mm	1100mm
Highest Speed	1000rpm	625rpm	312rpm
Tapping Direction	Universal Direction		
Air Blowing Time	No Limit		
Gross Weight	30kg	30kg	30kg
Standard Collets (ISO Standard)	GT12, M3-M10	GT12, M3-M12	GT12, M3-M16
	DIN371/376, JIS or other standard collets optional		

Automatic Scrap Blowing Tapping Machine



Features

- Air Valve can be opened and closed in Touch Screen, air volume is adjustable by valve. Articulated joint design nozzles easy to adjust to any direction. Copper high-pressure nozzle, can withstand high pressure, with high hardness and durable to use.
- Compact design air pump and controller greatly save space and cost, powerful pump control air volume accurately.
- The new Electric Tapping Machine is produced in principle of best quality, high precision and high value. The main components of the PLC are original imported, such as modules, chips, capacitors and so on, new design to make better performance in oil and dust proof.
- The machine frame is thicker and bigger to make machine more sturdy and durable.
- The power switch adopts one-button switch, which is practical and beautiful. It is matched military high-definition display and uses a cover to achieve dust-proof and anti-collision.
- Touch Screen display interface more concise and multi-functional, easy to operate, with "Actual Depth" function to monitor real-time tapping depth dynamically, "Pre-set Parameter Select and Storage" function for save time to reset workpiece working Parameters.

Specifications

Model	SFC-1200-16B	SFC-1200-20B	SFC-1200-24B	SFC-1200-30B	SFC-1200-36B
Power	220V/110V AC, 50HZ, 1200W				
Tapping Range	M6-M16	M6-M20	M6-M24	M6-M30	M6-M36
Max Work Radius	1200mm	1200mm	1200mm	1200mm	1200mm
Highest Speed	625rpm	312rpm	200rpm	200rpm	156rpm
Tapping Direction	Universal Direction				
Air Blowing Time	No Limit				
Gross Weight	48kg	48kg	48kg	50kg	50kg
Standard Collets (ISO Standard)	GT24, M6-M16	GT24, M6-M20	GT24, M6-M24	GT24, M6-M30	GT24, M6-M36
	DIN371/376, JIS or other standard collets optional				

Automatic Blowing and Lubricating Tapping Machine



Features

- Air Valve and Mist Valve can be opened and closed in Touch Screen, mist spray time is 0.1-25 seconds adjustable, air and mist volume is adjustable by valve. Articulated joint design nozzles easy to adjust to any direction. Copper high-pressure nozzle, can withstand high pressure, with high hardness and durable to use.
- Compact design mist and air pump and controller greatly save space and cost, powerful pump control air and mist volume accurately.
- The new Electric Tapping Machine is produced in principle of best quality, high precision and high value. The main components of the PLC are original imported, such as modules, chips, capacitors and so on, new design to make better performance in oil and dust proof.
- The machine frame is thicker and bigger to make machine more sturdy and durable.
- The power switch adopts one-button switch, which is practical and beautiful. It is matched military high-definition display and uses a cover to achieve dust-proof and anti-collision.
- Touch Screen display interface more concise and multi-functional, easy to operate, with "Actual Depth" function to monitor real-time tapping depth dynamically, "Pre-set Parameter Select and Storage" function for save time to reset workpiece working Parameters.



Specifications

Model	SFC-1000-10BL	SFC-1000-12BL	SFC-1000-16BL
Power	220V/110V AC, 50HZ, 600W		
Tapping Range	M3-M10	M3-M12	M3-M16
Max Work Radius	1100mm	1100mm	1100mm
Highest Speed	1000rpm	625rpm	312rpm
Tapping Direction	Universal Direction		
Mist Spraying Time	0.1-25s Adjustable		
Air Blowing Time	No Limit		
Gross Weight	30kg	30kg	30kg
Standard Collets (ISO Standard)	GT12, M3-M10	GT12, M3-M12	GT12, M3-M16
	DIN371/376, JIS or other standard collets optional		

Automatic Blowing and Lubricating Tapping Machine



Features

- Air Valve and Mist Valve can be opened and closed in Touch Screen, mist spray time is 0.1-25 seconds adjustable, air and mist volume is adjustable by valve. Articulated joint design nozzles easy to adjust to any direction. Copper high-pressure nozzle, can withstand high pressure, with high hardness and durable to use.
- Compact design mist and air pump and controller greatly save space and cost, powerful pump control air and mist volume accurately.
- The new Electric Tapping Machine is produced in principle of best quality, high precision and high value. The main components of the PLC are original imported, such as modules, chips, capacitors and so on, new design to make better performance in oil and dust proof.
- The machine frame is thicker and bigger to make machine more sturdy and durable.
- The power switch adopts one-button switch, which is practical and beautiful. It is matched military high-definition display and uses a cover to achieve dust-proof and anti-collision.
- Touch Screen display interface more concise and multi-functional, easy to operate, with "Actual Depth" function to monitor real-time tapping depth dynamically, "Pre-set Parameter storage" function for save time to reset workpiece working Parameters.



Specifications

Model	SFC-1200-16BL	SFC-1200-20BL	SFC-1200-24BL	SFC-1200-30BL	SFC-1200-36BL
Power	220V/110V AC, 50HZ, 1200W				
Tapping Range	M6-M16	M6-M20	M6-M24	M6-M30	M6-M36
Max Work Radius	1200mm	1200mm	1200mm	1200mm	1200mm
Highest Speed	625rpm	312rpm	200rpm	200rpm	156rpm
Tapping Direction	Universal Direction				
Mist Spraying Time	0.1-25s Adjustable				
Air Blowing Time	No Limit				
Gross Weight	48kg	48kg	48kg	50kg	50kg
Standard Collets (ISO Standard)	GT24, M6-M16	GT24, M6-M20	GT24, M6-M24	GT24, M6-M30	GT24, M6-M36
	DIN371/376, JIS or other standard collets optional				

Automatic Blowing & Lubricating Tapping Machine with Built-in Oil Tank



Features

- The wooden box with new hook design make it more convenient to unpack the wooden package, inner bubble pack make it much safer for shipment.
- 4.3 inch HD touch screen with protective cover for dust proof, real-time torque display, full-featured functions, easy to set various parameters.
- Professional servo motor driver with precision reducer, tapping process anti-oil, anti-dust and anti-collision, it has long life, can 24-hours operation.
- The modes between vertical and universal can be easily switched by simple operation, just press a switch and do not need tools and wrenches.
- The machine frame made by mould casting, much more thicker, multi-channel processing technology, machine stability is greatly improved. Built-in oil tank design makes the machine more concise.
- Mist spray and air blowing can be controlled separately by the system, they can be opened together or separately, the pipes is hidden design, instantaneous spray technology has solved the problem of delay spray and has realized instant spray by pressing the tapping switch.
- The connection of the column and connecting shaft both are copper sleeve with bearings, more flexible, more precise and more wear-resisting, tapping process more stable and higher precision.
- Three tapping modes optional, Manual Mode, Automatic Mode and Deep Hole Mode.



3-Arm Model

Specifications

Model	SFD-1000-10BL	SFD-1000-12BL	SFD-1000-16BL	SFD-1200-24BL	SFD-1200-30BL	SFD-1200-36BL
Power	220V/110V AC, 50HZ, 600W			220V/110V AC, 50HZ, 1200W		
Tapping Range	M3-M10	M3-M12	M3-M16	M6-M24	M6-M30	M6-M36
Max Work Radius	1100mm	1100mm	1100mm	1200mm	1200mm	1200mm
Highest Speed	1000rpm	625rpm	312rpm	200rpm	200rpm	156rpm
Tapping Direction	Universal Direction					
Mist Spraying Time	0.1-25s Adjustable					
Air Blowing Time	No Limit					
Gross Weight	30kg	30kg	30kg	48kg	50kg	50kg
Standard Collets (ISO Standard)	GT12, M3-M10	GT12, M3-M12	GT12, M3-M16	GT24, M6-M24	GT24, M6-M30	GT24, M6-M36
	DIN371/376, JIS or other standard collets optional					

Intelligent Tapping Machine System

4.3 inch HD touch screen with protective cover for dust proof

- Real-time torque display
- Full-featured functions
- Easy to set various parameters



Upgraded Configuration

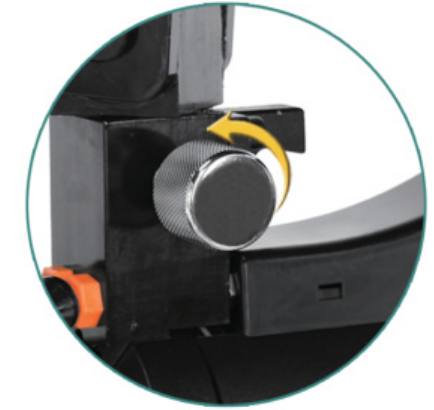
- Simple operation
- Does not take up space
- Flexible operation

Air Blowing & Mist Spray System

- Mist spray and air blowing can be controlled separately by the system, they can be opened together or separately.
- The pipes is hidden design, instantaneous spray technology has solved the problem of delay spray and has realized instant spray by pressing the tapping switch.



Easily Switch Between Vertical And Universal



The modes between vertical and universal can be easily switched by simple operation, just press a switch and do not need tools and wrenches

Upgrade Packaging



- The wooden box with new hook design Make it more convenient to unpack the wooden package
- Inner bubble pack make it much safer for shipment

Packing List



Base



Tapping Oil



Tapping Chuck



Power Cord

Mini Pneumatic Chamfering Machine



Features

- Mini Pneumatic Chamfering Machine is a power device that uses the expansion of compressed gas to convert pressure energy into mechanical energy.
- Work safety, not affected by vibration, high temperature, electromagnetic, radiation, etc., suitable for harsh working environment, and can work normally under adverse conditions such as flammable, explosive, high temperature, vibration, humidity, and dust. The output speed is high, and the chamfering finish of the product is good.
- It has an overload protection function and will not cause malfunctions such as mechanical damage. It can run continuously for a long time with full load, and the temperature rise is small.
- Pneumatic Chamfering Machine has the characteristics of simple structure, small size, light weight, large horsepower, easy operation and convenient maintenance.



Specifications

Model	SF-30Y
No-load Speed	30000rpm
Air Pressure	0.6-0.8mpa
Chamfering Capacity	C0.1-C1.5
Chamfering Angle	45°
Chamfering Hole Diameter	≥7mm
Air Consumption	0.4m ²
Weight	0.4kg

Handheld Curved Pneumatic Chamfering Machine



Chamfering effect
chamfering depth
0-3mm adjustable

Specifications

Model	SF-Q100
Chamfering Depth	0-3mm
Air Pressure	6-8kg/cm ²
Work Speed	13000rpm
Smooth Degree	N3 if no abrasion on blade
Net Weight	1.6kg
Chamfering Angle	45°

Features

- The main components of the machine are imported from Japan, the ultra-high speed improves the stability and durability of the machine.
- The machine is compact and lightweight, which is easy to carry, and it is more handy with facility to reduce fatigue when working. Easily chamfering the inner hole, outer circle or various types of complex workpieces, finish the work that the general machine can not do.
- The machine can easily adjust the intake air pressure to change the spindle speed. The normal working air pressure is in the range of 6-8kg/cm². Due to the excellent work speed and multi-blades, can greatly reduce the vibration and improve the finish degree of the surface.
- Suitable for a variety of chamfering materials, steel, aluminum and other metal, plastic workpieces.
- The shank/cutter head is improved to a sealed type, which effectively improves the operator's safety.

Handheld Linear Pneumatic Chamfering Machine



Specifications

Model	SF-Q120
Chamfering Depth	0-3mm
Air Pressure	6-8kg/cm ²
Work Speed	13000rpm
Smooth Degree	N3 if no abrasion on blade
Net Weight	2.3kg
Chamfering Angle	45°

Features

- The main components of the machine are imported from Japan, the ultra-high speed improves the stability and durability of the machine.
- The machine is compact and lightweight, which is easy to carry, and it is more handy with facility to reduce fatigue when working. Easily chamfering straight edge of the workpiece, make it easier to processing large workpieces, finish the work that the general machine can not do.
- The machine can easily adjust the intake air pressure to change the spindle speed. The normal working air pressure is in the range of 6-8 kg/cm². Due to the excellent work speed and multi-blades, can greatly reduce the vibration and improve the finish degree of the surface.
- Suitable for a variety of chamfering materials, steel, aluminum and other metal, plastic workpieces.
- The shank/cutter head is improved to a sealed type, which improves the operator's safety effectively.

Handheld Curved Electric Chamfering Machine



Specifications

Model	SF-100
Chamfering Depth	0-3mm
Power	220V /110V, 50HZ, 720W
Work Speed	10000rpm
Current	3.0A
Net Weight	3kg
Chamfering Angle	45°R1-4



Features

- SF-100 Handheld Curved Chamfering Machine is produced by our company for large machine tools, mould processing, ship building, tailor-made chamfering machines, has the following advantages over other chamfering machines in the market.
- The host machine is imported from Germany with stable performance(three months warranty).
- The machine is mainly used for irregular surfaces(such as outer circles, inner circle holds, etc.) and the inverted angle of the inner and outer cavity edges of irregular surfaces.
- Especially for the inverted angle of some curved edges of large workpieces, which general machine can not processing, it is convenient and quick to chamfering by curved chamfering machine, also can be used for chamfering end face of the rubber & plastic pipe.
- The machine structure is compacted, light weight, easy to operate, install 2 blades, cutting more smooth and better finish, can improve work efficiency greatly, reduce cost and operators labor intensity.
- The machine can be used for a dual-purpose blade switch, can process 45 degrees angle, also can process R angle, much more functional.

Handheld Linear Electric Chamfering Machine



Specifications

Model	SF-120
Chamfering Depth	0-3mm
Power	220V /110V, 50HZ, 720W
Work Speed	10000rpm
Current	3.0A
Net Weight	3.4kg



Features

- SF-120 Handheld Linear Chamfering Machine is produced by our company for large machine tools,mould processing, ship building, tailor-made chamfering machines, has the following advantages over other chamfering machines in the market.
- The host machine is imported from Germany with stable performance(three months warranty).
- The fuselage uses man-machine principle to make the operation simpler, easier, faster and more efficient.
- The knife disc is designed by international advanced end-milling method, which is better and the efficiency is ten times of ordinary chamfering machines.

Handheld Linear Roll-ball Chamfering Machine



Specifications

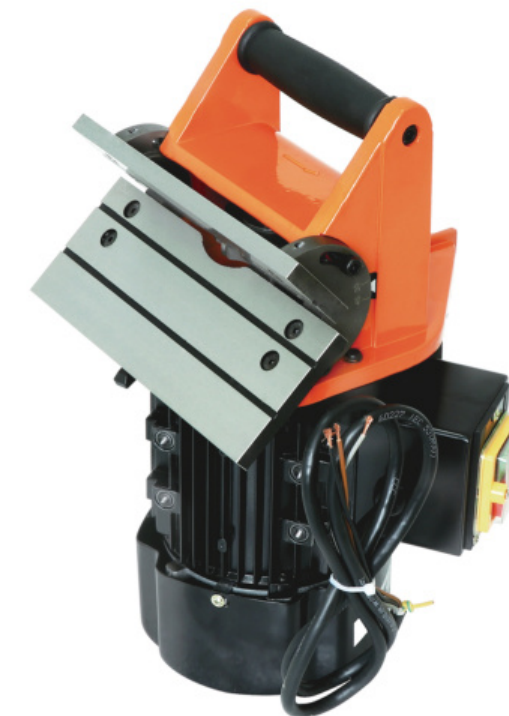
Model	SF-140
Chamfering Depth	0-5mm
Power	220V /110V, 50HZ, 1400W
Work Speed	10000rpm
Current	6.7A
Net Weight	4.5kg
Chamfering Angle	45°



Features

- SF-140 Handheld Straight Linear Roll-ball Chamfering Machine is produced by our company for large machine tools, mould processing, ship building, tailor-made chamfering machines, has the following advantages over other chamfering machines in the market.
- The host machine is imported from Germany with stable performance(three months warranty).
- The fuselage uses man-machine principle to make the operation simpler, easier, faster and more efficient.
- The knife disc is designed by international advanced end-milling method, which is better and the efficiency is ten times of ordinary chamfering machines.
- Pulley device for the machine chamfering panel, small friction and operate easily.

Handheld Powerful Roll-Ball Chamfering Machine



Specifications

Model	SF-200
Chamfering Depth	0-6mm
Power	220V/110V/380V, 50HZ, 750W
Work Speed	2800rpm
Chamfering Angle	15°-45°
Dimension	320*20*180mm
Net Weight	7.5kg

Features

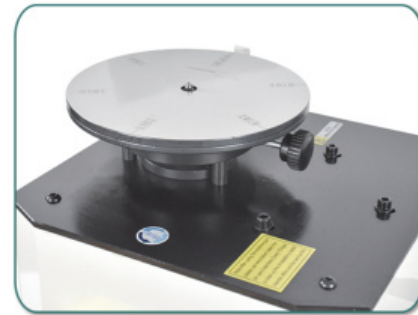
SF-200 Handheld Powerful Chamfering Machine suitable for chamfering of large workpieces without heat treatment, mechanical parts, manufactured and welded workpieces, and long non-ferrous metal objects, such as copper and aluminum. Guide rail with roll ball makes chamfering job easier.

High Speed Circular Chamfering Machine



Features

- 400 type Circular Chamfering Machine work speed 11000RPM, suitable for chamfering all kinds of machinery and mould workpiece.
- Arc-shaped and irregular curve all can be chamfered in one machine, realize multi-purpose function. Widely used in mould processing, machine tool manufacturing, valve manufacturing, hardware machinery, hydraulic parts, textile machinery chamfering and remove burr from plane and other jobs.
- Chamfering depth 0-5mm adjustable.
- The surface with hard chrome plating, durable and anti-rust.
- Chamfering machine don't need clamping, simple operation, chamfering deft, neat, adjustment is easy, economical and practical, efficiency is 10-20 times to traditional machines.



Specifications

Model	SF-400YH
Power	380V-750W-50HZ
Chamfering Depth	0-5mm
Work Speed	11000rpm
Smooth Degree	N5 if no abrasion on blade
Net Weight	40kg
Chamfering Angle	45°R2

High Speed Linear Guide Rail Chamfering Machine



Features

- 500 type Linear Chamfering Machine work speed 11000RPM, suitable for chamfering all kinds of machinery and mould workpiece.
- Linear Chamfering Machine adopt "Roll-ball" design to ensure "zero" scratch to treated copper and aluminum board.
- It's easy to change blades,also can use an used old lathe blade.
- The surface with hard chrome plating, durable and anti-rust.
- Chamfering depth 0-5mm adjustable.
- Chamfering machine don't need clamping, simple operation, chamfering deft, neat, adjustment is easy, economical and practical, efficiency is 10-20 times to traditional machines.



Specifications

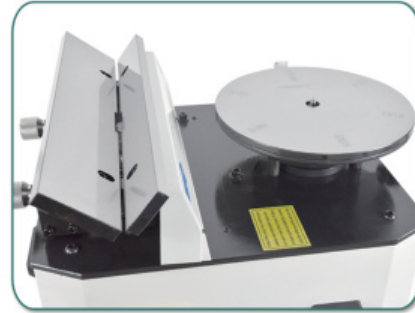
Model	SF-500DG
Power	380V-750W-50HZ
Chamfering Depth	0-5mm
Work Speed	11000rpm
Smooth Degree	N5 if no abrasion on blade
Net Weight	45kg
Chamfering Angle	45°

Complex High Speed Chamfering Machine

Features



- 900 type Complex High Speed Chamfering Machine no matter to proceed edge on a straight line or arc-shape (such as cylindrical, inner hole, the waist shape hole) and irregular inside and outside cavity edge chamfer, all can do 3D chamfering easily, can replace of CNC processing center, the parts which can not be chamfered by ordinary chamfering machine.
- Straight line, arc-shaped and irregular curve all can be chamfered in one machine, realize multi-purpose function. Widely used in mould processing, machine tool manufacturing, valve manufacturing, hardware machinery, hydraulic parts, textile machinery chamfering and remove burr from plane and other jobs. Chamfering depth 0-6mm adjustable.
- High speed cutting blade ensure chamfering accuracy, smoothness and high efficiency (Straight line speed is several times to common processing way), suit for enterprises to processing parts in batches, very high degree smooth on surface.



Specifications

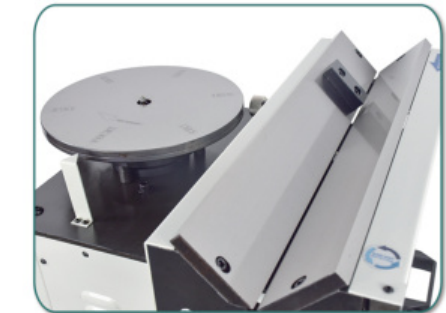
Model	SF-900LY
Power	380V-1100W-50HZ
Chamfering Depth	Straight: 0-6mm, Circle: 0-3mm
Work Speed	11000rpm
Smooth Degree	N5 if no abrasion on blade
Net Weight	56kg
Chamfering Angle	45° or R2
Work Panel Length	Straight: 350mm, Circle: 250mm

Complex High Speed Guide Rail Chamfering Machine

Features



- 900 type Complex High Speed Chamfering Machine no matter to proceed edge on a straight line or arc-shape (such as cylindrical, inner hole, the waist shape hole) and irregular inside and outside cavity edge chamfer, all can do 3D chamfering easily, can replace of CNC processing center, the parts which can not be chamfered by ordinary chamfering machine.
- Straight line, arc-shaped and irregular curve all can be chamfered in one machine, realize multi-purpose function.
- Widely used in mould processing, machine tool manufacturing, valve manufacturing, hardware machinery, hydraulic parts, textile machinery chamfering and remove burr from plane and other jobs. Chamfering depth 0-5mm adjustable.
- Guide chamfering machine adopts "guide" work mode to ensure "zero" scratch to treated copper and aluminum board and high speed cutting blade ensure chamfering accuracy, smoothness and high efficiency (straight line speed is several times to common processing way), suit for enterprises to processing parts in batches, very high degree smooth on surface.



Specifications

Model	SF-900DG
Power	380V-1100W-50HZ
Chamfering Depth	Straight: 0-6mm, Circle: 0-3mm
Work Speed	11000rpm
Smooth Degree	N5 if no abrasion on blade
Net Weight	65kg
Chamfering Angle	45° or R2
Work Panel Length	Straight: 500mm, Circle: 250mm

Drill Bit Grinding Machine



Specifications

Model	SF-GD13
Grinding Range	Φ3-Φ13mm
Collet Standard	ER20
Power	220V 50/60Hz 120W
Work Speed	5500rpm
Point Angle	90°-145°
Grinding Wheel	CBN(for HSS)*1, (SDC for Carbide optional)
Package	36X20X22cm
G.W./N.W.	10/8kg

Features

- Professional drill bit grinder, grinding is accurate and quick, no special skills required.
- Economical and practical, significant cost saving, improved use efficiency.
- The grinder uses diamond grinding wheel with an accurate angle and long service life.
- The machine is set up with the function of adjusting central point size, controls the quality and accuracy of the workpiece and extends the service life of the drill bit.

Drill Bit Grinding Machine



Specifications

Model	SF-GD30
Grinding Range	Φ13-Φ30mm
Collet Standard	ER40
Power	220V 50/60Hz 300W
Work Speed	5500rpm
Point Angle	90°-145°
Grinding Wheel	CBN230#(for HSS)*1,(SDC for Carbide optional)
Chuck	37*25*26cm
Package Size	43X26X34cm
G.W./N.W.	32/27kg

Features

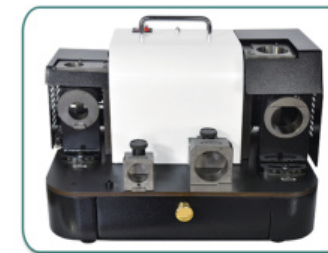
- Professional drill bit grinder. Grinding is accurate and quick, no special skills required.
- Economical and practical, significant cost saving, improved use efficiency.
- The grinder uses diamond grinding wheel with an accurate angle and long service life.
- The machine is set up with the function of adjusting central point size, controls the quality and accuracy of the workpiece and extends the service life of the drill bit.

SF-430 Drill Bit Grinder



Features

- Professional Drill Bit Grinder, accurate and fast grinding, simple operation, easy grinding without skills.
- Economical and affordable, greatly save costs and improve use efficiency.
- Direct installation of diamond grinding wheel, accurate angle and long life.
- The machine is equipped with the function of adjusting the size of the static point (center point), which can control the quality and precision of the workpiece and prolong the life of the drill bit.



Specifications

Model	SF-430
Grinding Range	Φ3-Φ30mm
Power	220V 50/60Hz 300W
Work Speed	4000P.R.M/min
Angle	90°145°
Grinding Wheel	CBN230 # SDC optional
Package Size	41.5×30×35.5cm
G.W./N.W.	37/31kg

High Precision Milling Cutter Grinder



Features

- Portable type Milling Cutter Grinder, grinding 2, 3, 4, 6 blades of straight shank end milling cutter.
- Rapid and precise grinding, easy operation.
- Diamond grinding wheel can complete all the processes, accurate, long life, save cost and improve efficiency.
- Suitable for straight shank end mills.



Specifications

Model	SF-313	SF-330
Grinding Range	Φ3-Φ13	Φ13-Φ30
Power	220V 50/60Hz 300W	220V 50/60Hz 450W
Work Speed	4500rpm	4500rpm
Grinding Angle	0°-5°	0°-5°
Apex Angle	0°	0°
First Relief Angle	8°	8°
Second Relief Angle	35°	35°
Grinding Wheel	CBN for HSS)*1, (SDC for Carbide optional)	
Package Size	37×25×26cm	42×30×31cm
G.W./N.W.	15/13kg	31/25kg

End Mill and Drill Bit Complex Grinding Machine



Specifications

Model	SF-313C
Grinding Objects	Drill bit, End mill
Blade Material	HSS tungsten
Blade Flutes	2 flutes, 3 flutes, 4 flutes, 6 flutes
Grinding Range	Φ3 ~ Φ13
Point Angle	Drill bit: 90° ~ 145°, End Mill 0° ~ 5°
Power	220V 50/60HZ 300W
Work Speed	5000rpm
Package Size	37X19X23(cm)
G.W./N.W.	21/16kg

Features

- The machine combination can grind 3 ~ 13mm flat knife, and 2 ~ 13mm straight shank twist drill.
- The grinding wheel can grind diameter 3 ~ 13 blades, 2, 3, 4, 6 flutes end milling cutter.
- It can be a grinding wheel grinding diameter 2 ~ 13 auger bit.
- It can change the tool Angle, solve the problem of processing.

Screw Tap Grinder



Specifications

Model	SF-Y3
Grinding Range	Φ5-Φ20
Apex Angle	5° ~ 45°
Speed	5300rpm
Voltage	AC220V 50/60HZ
Motor	180W
Grinding Wheel	CBN (or SDC)
Chuck	Φ5, Φ7, Φ8, Φ9, Φ10, Φ12, Φ13, Φ14
Package Size	320X210X200(mm)
G.W./N.W.	11/10kg

Features

- Special equipment for grinding screw taps, precise and fast, easy to operate, no special skills required, time and cost saving.
- Mainly used for apex angle grinding.
- The grinder uses diamond grinding wheel with an accurate angle and long service life.
- Electronic DC motor control: stable, high-efficient, powered, long time use.
- Can be customized for left-hand thread screw tap.

Universal Cutter Grinder



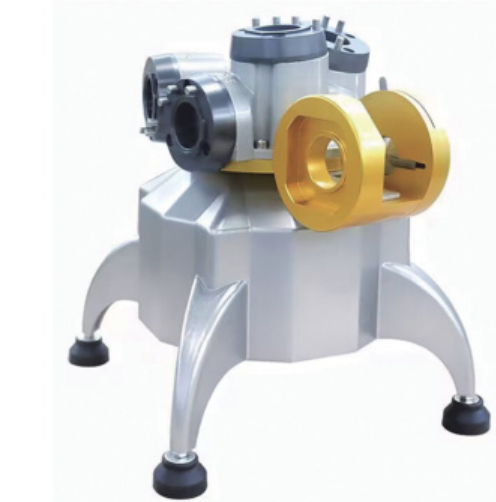
Specifications

Model	SF-U2	SF-U3
Grinding Wheel	Diameter:100mm, Thickness:50mm, Hole Diameter:20mm	
Work Speed	5200rpm	5200rpm
Spring Pocket Clamp Range	Φ3~Φ16mm	Φ3~Φ28mm
Blade Fixer Moving Range	140mm	140mm
Blade Fixer Fine Adjustment Range	18mm	18mm
Taper Angle	0°~100°	0°~100°
Negative Taper Angle	0°~20°	0°~20°
Relief Range	0°~25°	0°~25°
Power	380V/220V, 50/60Hz, 0.37KW	
G.W./N.W.	55.5×45×43cm/52kg	55.5×44.5×42.5cm/56kg

Features

Universal cutter grinder is suitable for grinding different diameters, shapes and angles of engraving knives, round knives, straight shank milling cutters, gravers, die milling used on computer engraving machines, engraving millers, machining centers, engraving machines, dividing machines, marking machines, etc. Easy to operate, high precision, great quality-price ratio. Projector can be optional.

Universal Milling Cutter Grinding Machine



Specifications

Model	SF-EG16	SF-EG25
Grinding Range	Φ3-Φ16	Φ4-Φ25
Power	220V/400W 50/60HZ	220V/400W 50/60HZ
Speed	5000rpm	4500rpm
Grinding Wheel	SDC standard,CBN optional	
Size	420X360X380(mm)	
Weight	12kg	14kg

Features

Convenient and Efficient Milling Cutter Grinding Machine

- Straight shank end mills (2, 3, 4 blades) can be drilled, milled and cut simultaneously in the workpiece processing after grinding, it eliminates the troublesome process of drilling, save time, save manpower and save energy.
- The amount of grinding can be adjusted at will.
- Grind one milling cutter in one minute, the cutting edge is through center grinding with high grinding precision.
- This machine adopts diamond grinding wheel, due to its high hardness grinding performance, it is widely used not only in processing of tungsten steel, hard alloy steel and tool steel, but also can work in the long period do not need fixed and maintenance.

Guide Rod Vise



Features

- Adopting the guide rod structure to make the slider move smoothly.
- It is one of the main accessories of drilling machine, woodworking machinery and other machines.

Specifications

Model	SF-DG3	SF-DG4	SF-DG6	SF-DG8
Width of Jaw(mm)	75	100	160	200
Height of Jaw(mm)	35	46	53	53
Max Opening(mm)	76	102	152	203
G.W./N.W.	6.5/6kg	12/11kg	15/14kg	24/23kg
Package Size	46x25x18cm (4pcs/box)	30x20x21cm(2pcs/box)	39x26x12cm	42x31x11cm

Tilting Vise



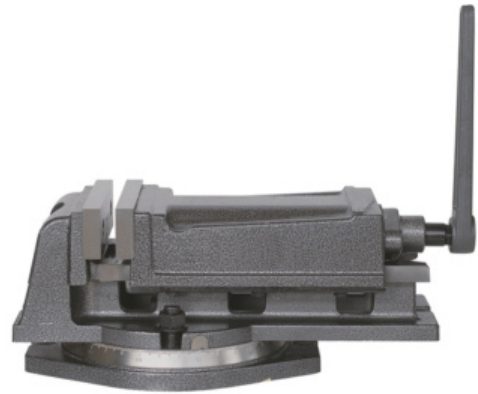
Features

- Tilting drilling machine vise can be adjusted and locked from horizontal position to vertical position (0°-90°) freely.
- One of the main accessories of the drilling machine, which can be used for the processing of inclined surfaces.

Specifications

Model	SF-QK3	SF-QK4
Width of Jaw(mm)	75	100
Height of Jaw(mm)	35	46
Max Opening(mm)	76	102
G.W./N.W.	5.5/5kg	8.5/8kg
Package Size	36x26x28cm (4pcs/box)	25x21x14cm

High Precision Rotatable CNC Milling Bench Vise



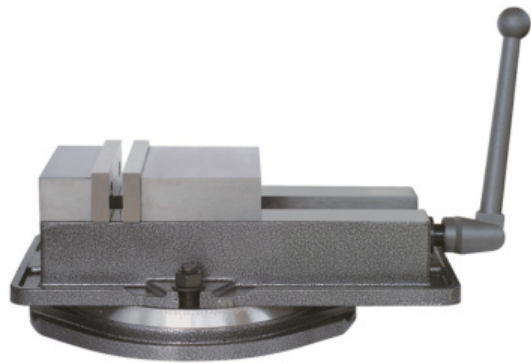
Features

- The parallelism of the two jaws and the perpendicularity of the two faces in the two jaws are $\leq 0.025\text{mm}/100\text{mm}$.
- Widely used in iron beds, drilling machines, etc., for a variety of planes, grooves, angles, holes and other objects processing.

Specifications

Model	SF-QH80	SF-QH100	SF-QH125	SF-QH160	SF-QH200
Width of Jaw(mm)	80	100	125	160	200
Height of Jaw(mm)	30	35	40	52	63
Max Opening(mm)	60	75	95	120	150
G.W./N.W.	6/5.7kg	8.5/8kg	15/14kg	29/28kg	39/38kg
Package Size	49x25x12cm(4pcs/box)	28x14x13cm	32x18x14cm	43x23x18cm	47x27x19cm

High Precision Rotatable CNC Milling Bench Vise



Features

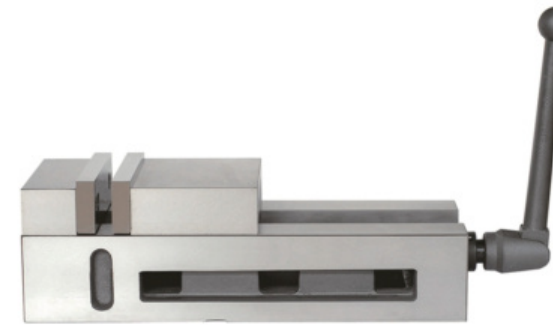
- This product is one of the main accessories for milling machines and drilling machines.
- The parallelism of the two jaws and the perpendicularity of the two jaws to the rail surface are $\leq 0.025\text{mm}/100\text{mm}$.
- When the movable jaw moves horizontally, the semi-spherical ball on it will have a vertical downward pressure, so the clamping workpiece will not float.
- The opening degree of the jaws can be changed in four directions according to the needs.



Specifications

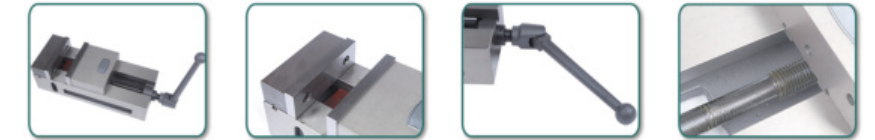
Model	SF-QM100	SF-QM125	SF-QM160	SF-QM160L	SF-QM200
Width of Jaw(mm)	100	125	160	160	200
Height of Jaw(mm)	32	40	45	45	50
Max Opening(mm)	100	125	170	200	230
G.W./N.W.	14/13kg	21/20kg	31/30kg	32/31kg	48/47kg
Package Size	36x24x14cm(4pcs/box)	42x27x15cm	45x31x18cm	49x31x17cm	56x35x20cm

Super Precision CNC Milling Bench Vise



Features

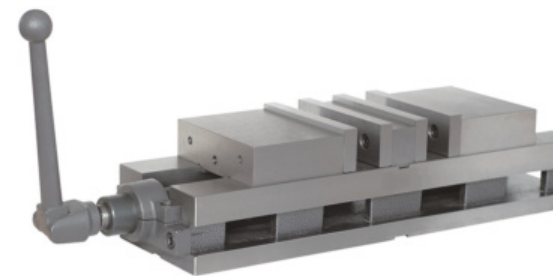
- This product is one of the main accessories for milling machines and drilling machines.
- The parallelism of the two jaws and the perpendicularity of the two jaws to the rail surface are $\leq 0.025\text{mm}/100\text{mm}$.
- Can be used in a single unit or in multiple units.
- Angle-fixed clamping structure prevents the floating of workpiece.



Specifications

Model	SF-QMG100	SF-QMG160
Width of Jaw(mm)	100	160
Height of Jaw(mm)	32	45
Max Opening(mm)	100	200
G.W./N.W.	9/8kg	24/23kg
Package Size	33x11x11cm	45x18x14cm

Super Precision Bi-directional CNC Milling Bench Vise



Features

- This product is one of the main accessories for milling machines and drilling machines.
- The parallelism of the two jaws and the perpendicularity of the two jaws to the rail surface are $\leq 0.025\text{mm}/100\text{mm}$.
- Can be used in a single unit or in multiple units.
- Angle-fixed clamping structure prevents the floating of workpiece.
- It has two clamping stations for holding two workpieces of equal or different sizes, and it is also possible to hold two workpieces with different working faces at different clamping positions.

Specifications

Model	SF-SX100	SF-SX160
Width of Jaw(mm)	100	160
Height of Jaw(mm)	32	45
Max Opening(mm)	75	95
G.W./N.W.	15/14kg	41/39kg
Package Size	52x11x12cm	64x17x16cm

High Precision Universal Direction CNC Milling Bench Vice



Features

- It can be adjusted and locked from horizontal position to vertical position (0°-90°).
- With a rotating base, can be rotated 360°.
- Widely used in processing various angles of planes, slots, holes, etc.

Specifications

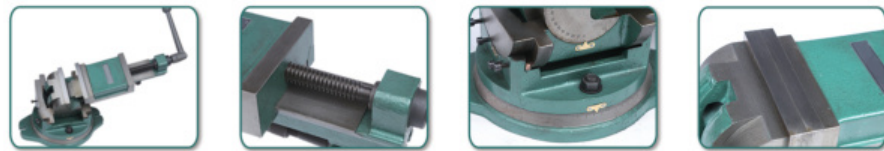
Model	SF-QHK100	SF-QHK125	SF-QHK160
Width of Jaw(mm)	100	125	160
Height of Jaw(mm)	41	46	50
Max Opening(mm)	75	95	120
G.W./N.W.	16/15kg	23/22kg	33/32kg
Package Size	34x20x17cm	40x24x18cm	44x26x21cm

High Precision Universal Direction CNC Milling Bench Vice



Features

- The parallelism of the two jaws and the perpendicularity of the two jaws to the guide surface are $\leq 0.025\text{mm}/100\text{mm}$.
- The silver body, the two-way body and the sliding seat adopt tilted structure to realize positioning in three directions and various orientations.
- Widely used in mechanical processing, electrical processing and other complex parts processing.



Specifications

Model	SF-QW100	SF-QW125
Width of Jaw(mm)	105	125
Height of Jaw(mm)	40	44
Max Opening(mm)	105	120
G.W./N.W.	25/24kg	27/26kg
Package Size	47x23x21cm	51x23x21cm

Super Precision Hydraulic CNC Milling Machine Vice

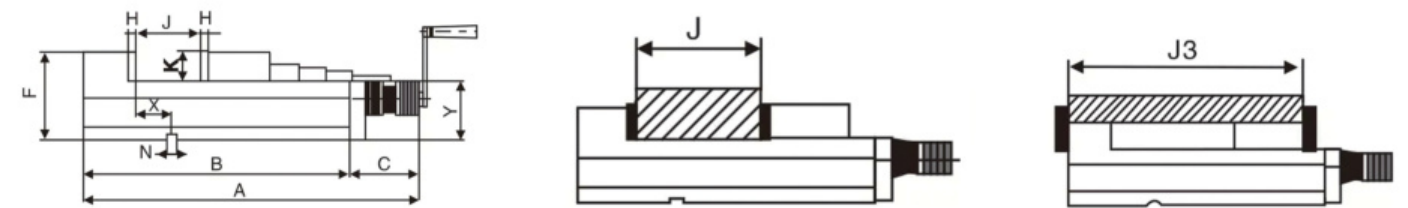
High power type omnibearing precision oil pressure vice, suitable for vertical, horizontal comprehensive cutting center, general milling machine, radial drill, planer, boring machine, and other mechanical processing area.

Features

- MC double force turbocharged vise, suitable for vertical, horizontal integrated cutting machine FMS system to do heavy cutting.
- Precise double-pressure boost design, easy to operate, suitable for light and heavy cutting, efficient and labor-saving.
- The body and the fixed tiger's mouth are integrally formed, which can eliminate the floatation of the tiger's mouth plate and the inclination of the workpiece.
- A high tensile strength spheroidal graphitized cast iron (FCD60~60kgs/mm) is used in the body of the vise, the hardness is above HRC45 to ensure long-term wear resistance.
- Seal and other key parts all are famous brand products of German.



Specifications



Model	A	B	C	D	F	H	J	J3	K	N	X	Clamping force (kgf)	Weight
SF-DCV130	464	340	124	102	133	15	0-130	175-305	48	18	45	4000	37KG
SF-DCV180	539	415	124	130	163	15	0-180	213-393	55	18	65	4500	44KG
SF-DCV220	624	500	124	160	163	15	0-220	223-443	58	18	99	4500	53KG
SF-DCV340	734	610	124	200	190	15	0-340	230-570	70	18	70	5000	84KG

Portable Tap Extractor Electric Sparking EDM Machine

Processing small holes, multiple holes or remove taps, drill bits, screws, reamers, plug gauges and other tools, used in the hardened steel, such as cemented carbide, copper and other metal materials.



Features

- Non-destructive processing without damaging the workpieces and threads.
- Touch screen operation, automatic processing depth control.
- Working head can be arbitrary angle adjustment, can be working in any size, shape of workpieces, especially suitable for remove broken taps and drill bits in big workpieces.
- Easy to use, simple to operate, stable and reliable.
- The host adopts stepper motor imported from Japan with servo system, equipped with high-voltage electromagnetic pump imported from Italy, and the screw adopts military industrial standards.

Specifications

Model	Hole Processing Range	Remove Tap Range	Processing Speed	Maximum Processing Depth	Voltage	Power
SF-S1	1.0-30mm	M2-M30	1.0mm/min	100mm	220VAC	1000W

Pneumatic Motor



Specifications

Model	SF-12A	SF-16A	SF-24A
Tapping Range	M3-M12	M3-M16	M6-M24
Air Pressure	6-8kg/cm ²	6-8kg/cm ²	6-8kg/cm ²
No-load Speed	400rpm	250rpm	90/250rpm
Net Weight	1.7kg	2.9kg	3.7kg

Permanent Magnetic Chuck



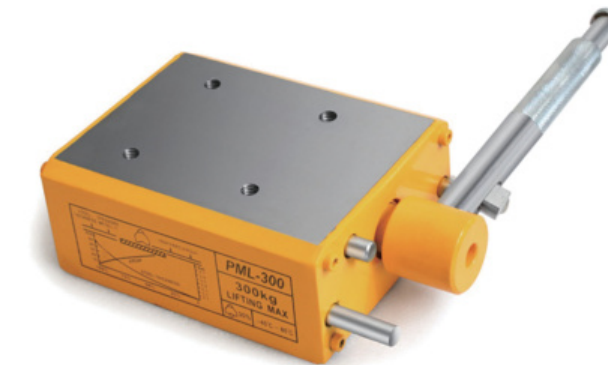
Features

- Innovative design based on human technology, labor saving, more convenient and safer.
- No electricity is needed, no danger in the absence of power, power outages, and wiring system failure, and it can be operated outdoors, Use of high-energy magnetic materials, smaller size, lighter weight and stronger magnetic force
- High safety factor, maximum pulling force is 3-3.5 times of rated lifting capacity
- The bottom of the suction surface with a V-shaped groove design, which can lift the corresponding round bar and steel plate.

Specifications

Model	SF-3	SF-6	SF-10	SF-20	SF-30
Rated Lifting Capacity(kg)	300	600	1000	2000	3000
Max Handle Operation Force(kgf)	8	8	16	16	20
Cylindrical Object Minimum Dia mater(mm)	75	75	110	140	140
Lifting Weight(kg)	50<~≤300	100<~≤600	300<~≤1000	600<~≤2000	1000<~≤2000
Net Weight	10	24	52	125	220
Dimension(mm) L*W*H	205*92*197	281*122*254	319*176*358	451*234*516	550*286*633

Permanent Magnetic Chuck



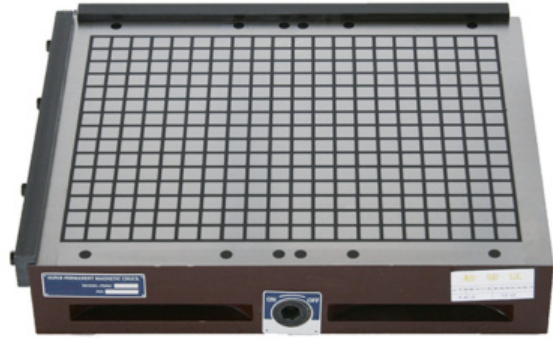
Features

- It is used for fixing the base of the tapping machine.
- Compact structure, light weight, easy to operate.
- Without electricity, magnetic permanent, use safety, can be in field operation.
- High safety coefficient, maximum pull-off force in 3-3.5 times, with safety device, to prevent misoperation.
- Maintenance-free design, long service life.

Specifications

Model	Rated Capacity(kg)	Size(mm)				Maximum Pulled-out Force(N)	Net Weight (kg)
		L	B	H	R		
PML-300	300	153	122	65	106	1050	9
PML-600	600	195	162	74	216	2100	18

Permanent Magnetic Chuck



Features

- Magnetic force produced by high energy materials, no time limit, no energy consumption, no heat, environmental safety, the operation is simple and practical.
- Stacking of strong attraction, magnetic, according to the workpiece contact area increases, can be used to power the milling and drilling.
- Super strong suction cup panel big rigidity, good stability, in use process does not produce distortion, which can realize precision machining.
- Simple mechanical switch, do not need power supply, avoid appear disappeared as suddenly loses power and make the magnetic workpiece falls off.
- Simple quick replacement of the clamping workpiece, workpiece clamping adjust working hours, to realize five surface processing, improve work efficiency by 80%.

Specifications

Model	Size(mm)			Magnetic block	Magnetic force block (kgf)	Total Suction (kgf)
	A	B	H			
PML-2040	200	400	80	136	25	3400
PML-3040	300	400	90	176		4400
PML-4040	400	400	90	240		6000
PML-4050	400	500	90	300		7500
PML-4060	400	600	90	375		9375

Cast Iron Workbench



SF-WB



SF-WB-D

Size: 800(L)*500(W)*700(H)mm , 900(L)*600(W)*700(H)MM
Height can be customized according to needs

Over-load Protection Tapping Collet



Features

- High precision, quick change, long-life with torque protection function.
- ISO, JIS, British, DIN371/376 standard torque chucks available.
- Torsion react sensitive and changes according to various material to set up corresponding torque.
- Used for kinds of tapping machines include Electric Tapping Machines and Pneumatic Tapping Machines.

Specifications

GT12-ISO		GT24-ISO		GT48-ISO		GT12-DIN 371		GT12-DIN 376		GT24-DIN 376	
M3	3.15*2.5	M6-M8	6.3*5	M24	18*14	M2	2.8*2.1	M4	2.8*2.1	M6	4.5*3.4
M4	4*3.15	M10	8*6.3	M27-M30	20*16	M3	3.5*2.7	M5	3.5*2.7	M8	6*4.9
M5	5*4	M12	9*7.1	M33	22.4*18	M4	4.5*3.4	M6	4.5*3.4	M10	7*5.5
M6-M8	6.3*5	M14	11.2*9	M36	25*20	M5	6*4.9	M8	6*4.9	M12	9*7
M10	8*6.3	M16	12.5*10	M39-M42	28*22.4	M6	6*4.9	M10	7*5.5	M14	11*9
M12	9*7.1	M18-M20	14*11.2	M45-M48	31.5*25	M8	8*6.2	M12	9*7	M16	12*9
M14	11.2*9	M22	16*12.5			M10	10*8	M14	11*9	M18	14*11
M16	12.5*10	M24	18*14					M16	12*9	M20	16*12
		M27-M30	20*16							M22	18*14.5
		M33	22.4*18							M24	18*14.5
		M36	25*20							M27	20*16
										M30	22*18
										M33	25*20
										M36	28*22

Tapping Oil



Features

- SF-TO is an effective tapping oil, which is produced by refined base oil and various extreme pressure anti-wear additives.
- It can effectively improve the processing precision, excellent surface finish, lubrication and extreme pressure, excellent chip removal performance, strong permeability, and effective protection of taps and cutting tools, reduce chipping and broken taps.
- Effectively suppress temperature rise, reduce the occurrence of sintering and chipping, and prevent surface scratches and wrinkles on the workpiece. Suitable for machining of hard materials such as carbon steel, alloy steel and stainless steel.

Titanium Coating Screw Tap



Titanium Coating EX-POT

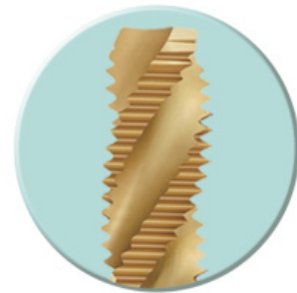


Titanium Coating EX-SFT



Performance
Chip discharge from bottom, Through-hole
Advantage
Good heat dissipation
Good through hole effect
Can tap to the blind hole bottom
No chips left, chip discharge smooth
Easy to cut into the bottom
Good cutting effect

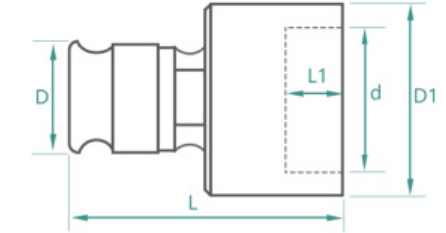
Application
Cutting a material that is continuously crimped
Through-hole processing
Inner wall with axial groove
High speed processing



Performance
Chip discharge from top Blind hole
Advantage
Strong cutting ability
Wide range usage
Blade Angle groove
No chip block
Strong resistance to damage
Strong cutting capacity

Application
Cutting a material that is continuously curved
Blind-hole processing
Inner wall with axial groove

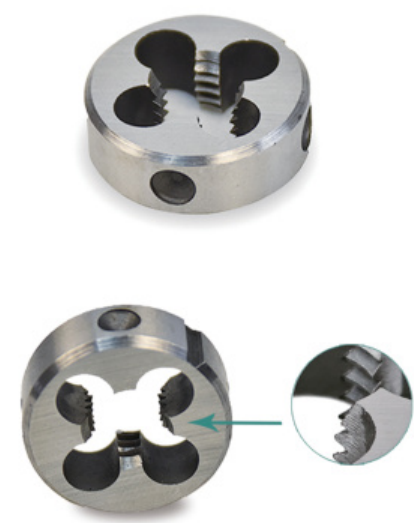
External Threading Die Holder



Specifications

Model	D	D1	L	d	L1	Max Threading Depth
GT12-M3-M6	19	28	45	20	3.4	45
GT12-M8		33	50	25	8.5	50
GT12-M10		38	55	30	10	55
GT12-M12-M14 Coarse		48	60	38	13	60
GT12-M12-M14 Fin thread	9					
GT24-M3-M6	31	28	55	20	3.4	55
GT24-M8		33				
GT24-M10		38	30	10		
GT24-M12-M14 Coarse		48			70	
GT24-M12-M14 Fin thread	9					
GT24-M16-M20 Coarse	58	90	45	18	90	
GT24-M16-M20 Fin thread				13		
GT24-M22-M24 Coarse	68	120	55	20	72	
GT24-M22-M24 Fin thread				15		

HSS Threading Die



Specifications

Model	Thread Size/mm	Pitch/mm	Diameter/mm	Thickness/mm	Chip Hole
M3*0.5	3	0.5	20	5	3
M4*0.7	4	0.7	20	5	3
M5*0.8	5	0.8	20	7	4
M6*1	6	1	20	7	4
M8*1.25	8	1.25	25	9	4
M10*1.5	10	1.5	30	11	4
M12*1.75	12	1.75	38	14	4
M14*2	14	2	38	14	5
M16*2	16	2	38	14	5
M18*2.5	18	2.5	45	18	5
M20*2.5	20	2.5	45	18	6
M22*2.5	22	2.5	45	18	6
M24*3	24	3	55	22	6
M27*3	27	3	55	22	6
M30*3.5	30	3.5	65	26	7

GT24-GT12 Adapter



GT12/GT24 Direction Positioner



GT12/GT24 Drilling Collet

